



Ryuseki

Innovation Now and Beyond
A People-Centric Company



Haruo Toume,
President and Chief Executive Officer

Thank you for your continued support of Ryuseki and Ryuseki groups.

As the first private oil supply company after the Second World War in 1950, Ryuseki was founded by Ichiro Inamine, who put his heart and soul into the economic recovery of Okinawa. Ever since, we've served utilities to the Okinawan Islands whose infrastructure is particularly vulnerable to natural disasters, like typhoons. Ryuseki has dedicated itself to supplying a safe and stable energy under the founder's guiding principle of "Mission to Public Trust". This principle applies to everyone on Okinawa, whichever island they may be, as well as supporting the islands' dynamic yet creative industrial development. The company uses its philosophies of "Harmony in the Region," "Trust in People," and "Proceed to the Future" in our ceaseless efforts to fulfil our mission and to support our home.

The energy industry is now undergoing a transformation. Oil prices fluctuate by factors like the geopolitics of oil producing countries; the innovation in the automobile, machine, and equipment technologies; the trending shifts to alternative energy sources; the diminishing demand for petroleum products; and the liberalization of the electrical and gas energy markets, among other things. In response to those changes, our 3-year intermediate plan "On Your Mark 2020 - A Vigorous Start Toward the Future," is in its third and final year. Our goal is to be an enduring, centenarian company with a visionary policy entrusted by the public, withstanding changes in the environment.

Presently business environments and lifestyles are changing significantly, requiring us to restructure and renew so that we can develop further. To that end, our company has conducted organizational realignment with our group companies last year.

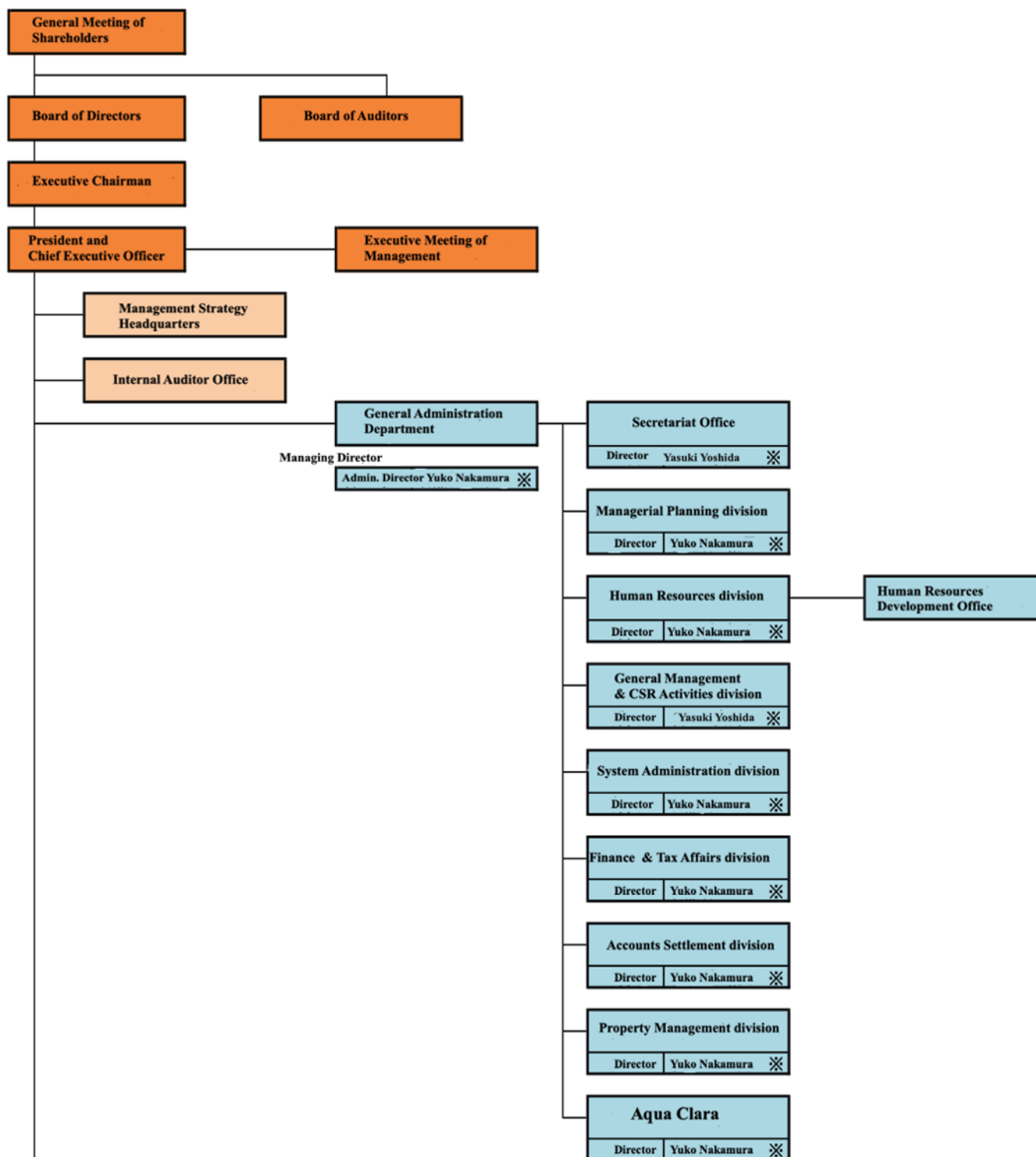
Driven by this year's management slogan, "Collective Strength as One Ryuseki," we strive to "support the utilities and the lives of the region" in which our company's role is vital for our clients and the community in the future.

We celebrate our 70th anniversary this year. We thank all of Okinawa for its patronage. Going forward, we continue to execute our absolute mission of supplying safe and stable energy, identifying and creating (solutions) to our customer's immediate needs, and continuing to provide value. We humbly and sincerely ask for your continued support and patronage.

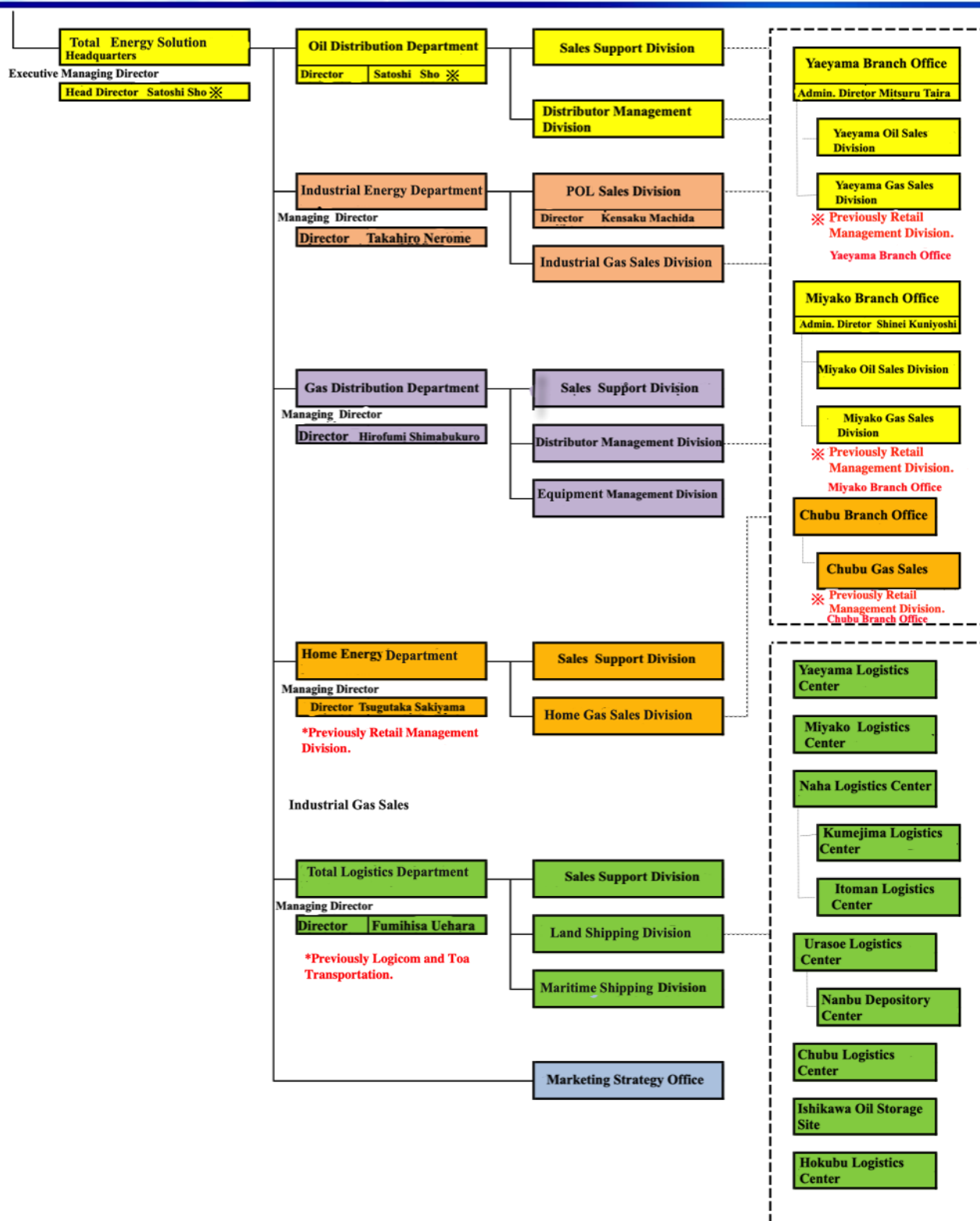


Ryuseki Head Office

Company Name	RYUSEKI CORPORATION
Head Office Address	2-2-3 Irijima Urasoe Okinawa, 901-2123 Japan TEL 098-875-5000 FAX 098-875-0270
Date of Establishment	September 6,1950
Capital	1,050 million yen
President, Chief Executive Officer	Haruo Toume
Annual Sales	632,200 million yen (As of FY2019)
Bank of Account	Bank of the Ryukyus, Bank of Okinawa, Okinawa Kaiho Bank, JA Okinawa, Shōkō Chukin Bank, MUFG Bank, Nōrinchūo Bank, Okinawa Development Finance Corporation, Nippon Life Insurance Company, Mizuho Bank
Description of Business	Wholesale and retail trade of petroleum, LNG (liquefied natural gas), any and all businesses related to the foregoing items.
Number of Employees	391 (As of March 31, 2020)
Board of Directors	Katsuya Kinjo, Executive Chairman Haruo Toume, President and Chief Executive Officer Satoshi Sho, Executive Managing Director Kiyoshi Kamiuntan, Senior Managing Director Takahiro Nerome, Managing Director Hirofumi Shimabukuro, Managing Director Yuko Nakamura, Managing Director Tsugutaka Sakiyama, Managing Director Fumihisa Uehara, Managing Director Seikou Yasuoka, Managing Director Hajime Kuniyoshi, Standing Corporate Auditor Tatsuhiko Yamashiro, Corporate Auditor Yasushi Tokashiki, Corporate Auditor



To be continued to
“Total Energy Solution Headquarters”



Petroleum Commerce

In 1950, Ryuseki began as Okinawa's sole private oil supply company, enhancing the post-war rebuilding momentum. Since then, we've devoted ourselves to sustain and support the community by providing a stable supply of energy, a crucial and fundamental aspect in the building of a social infrastructure.

Oil Distribution Department

Automobiles are valued assets and are indispensable in the Okinawan life. Ryuseki SS (Service Station) provides complete amenities and maintenance services for our customer's cherished automobiles. Beyond providing excellent petro-filling services, Ryuseki SS caters to every driver's needs by offering free check-ups on items from tires to engines. We have a meticulous car-wash service that has been highly touted by our customers. Our service stations offer a variety of car safety inspection services in which customers can choose plans best meeting their needs. Within our car-detailing services, we offer UV window films, a must-have item for drivers who look for reprieve from Okinawa's intense sun. Ryuseki offers a customer convenience of mutual settlement method at 60 member SS for gas purchase per liter and a loyalty program with the Pita Eco Card. Enrollment is free, and members get special pricing and points on purchase at participating Ryuseki SS. Points can be used to redeem gasoline coupons. Convenient for gifts or promotions, the Ryuseki Gift Coupons are available for purchase in any Ryuseki SS.

Be sure to check out our menu for other available high-quality services.

【Business Outline】Oils, Lubricants and Automobile-related Wholesale Products

Industrial Energy Department

Oil energy enriches livelihoods and bolsters the industrial infrastructure for corporate enterprises of Okinawa. Since establishment, our company has provided high caliber sources of energies for the electrical, the marine, the tourism trade, and the medical fields. Services range from factory ventilation to household plumbing. Our services covers even the remotest of the Okinawan islands. Six strategic locations of industrial petroleum stations supply oil to Okinawa, a typhoon-prone archipelago. The energy supply system transforms with time. Energy forms have become customizable for their use and or purposes with the adoption of new systems such as decentralized electrical generation. Our company can provide the best possible energy solutions to any customer. We extend excellent maintenance services even after an order is complete. Ryuseki is committed to customer satisfaction.

【Business Outline】Oils and Lubricants Retail / Energy Products Distribution (decentralized electricity source, etc.) / Air Conditioning Equipment Distribution (KHP)



Car inspection and detailing service station, Yonaha



Naha Logistics Center



Asahimaru the 8th, Fuel Barge

Natural Gas Commerce

In 1957, Ryuseki began its second undertaking, natural gas. Utilizing advanced equipment and systems, the company provides value-added, high quality services.

Gas Distribution Department

Natural gas is an indispensable form of daily ecologically friendly energy source. It isn't just used for cooking or for heating water anymore; its applications are diverse, from air-conditioning to power generation. Ryuseki offer a proposal of a pleasant lifestyle with the best utilized properties of gas service. In addition to the distribution of LP (liquid propane) gas and equipment, we offer an array of products such as gas-engine heat pumps (GHP) and kitchen units to meet all of our customers' needs.

In supplying natural gas securely and dependably, we have established comprehensive delivery routes throughout Okinawa via five delivery center locations. To ensure efficient delivery and safe, secure service monitored around the clock, we employ a vehicle tracking data system called, G-Net 7. We offer consistency and reliability utilizing bar-code automatic filling functions for installations and inspection of LP gas cylinders.

【Business Outline】 LP and LNG (liquid natural gas)
Distribution / Fuel Containers and Gas-powered Appliances /
Air-conditioning Equipment (Gas Heat Pump)

Home Energy Department (Previously Retail Management Division)

We deliver LP gas, a clean and safe source of energy that is nearly unaffected by natural disasters, throughout households in Okinawa and to the Okinawa' outermost islands to include Miyako and Yaeyama. Natural gas utilities are more versatile than ever before. It provides power for cooking, heating water, air condition and even power generation. We offer solutions and provide services that enhance lifestyles and assist businesses secure stable and safe energy. Providing safe and secure natural gas energy is priority number one.

【Business Outline】 Distribution, Inspection and Safety
Management of LP Gas for Home and Professional Use / LNG Gas
Distribution / Marketing and Distribution for Gas Powered
Appliances, Domestic and Professional Use / GHP Marketing and
Distribution / Household Appliances and Systems Marketing and
Distribution



Urasoe Logistics Center, LP Gas Filling Station



LP Gas Cylinder Inspection Station



Total Logistics Department

Land Shipping Division (Previously Ryuseki Logicom)

The Land Shipping Division manages fuel, gas storage facilities and is responsible for the transport of petroleum products, LP gas, and LNG for private homes and for industry.

【Business Outline】 General Cargo Transportation, Aircraft Refueling /Lubricant Transportation and Management / Facilities Management / Oil Tank Facilities Management



Maritime Shipping Division (Previously Toua Transportation Corporation)

The Maritime Shipping Division handles oil shipping operations by domestic tanker chiefly within Okinawa Prefecture and at-sea refueling operations for vessels around Naha, Yaeyama and Miyako.

As the first domestic shipping operator in Okinawa to acquire ISM Code (International Safety Management) in 2002, we remain steadfast to safety management rules with a basic principle that ensures health of employees, safe operation of vessels and environment conservation of the earth. With the first principle in sea transport operation, "We contribute to society through safe and smooth navigation, securing stable supply and ceaseless frontier spirit", we will further endeavor with both land and sea operation working closely, to supply stable energy and play a vital role in economical development of Okinawa.

【Business Outline】 Coastal Shipping Operations



CSR Activities

Ryuseki actively engages in the CSR (Corporate Social Responsibility) activities, with focus in the three tenets of management, compliance, and mental health care. Guided by our fundamental principle, "Mission to Public Trust," we make the utmost effort to secure and maintain confidence and the trust of each customer and stake holder, the community, and Okinawa as a whole. To be transparent in our pledge to uphold CSR activities, we have set up a task force to oversee CSR activities.

Internal Audit Office

In compliance with corporate law, our Internal Audit Office was set up in 2008 to ensure effective internal operation and management. Under the direct supervision of the company president, the Internal Audit Office audits corporate activities for compliance based on laws, corporate philosophy and company rules. The office works closely with the auditing officer to provide advice, recommendations, and assistance for continual improvement.

Ryuseki Finance Report

Financial Period		The 65th	The 66th	The 67th	The 68th	The 69th
Date of Settlement		Mar-2016	Mar-2017	Mar-2018	Mar-2019	Mar-2020
Sales Volume (mill. yen)		50,099	52,187	59,810	64,506	63,256
Ordinary Income (mill. yen)		1,914	2,614	2,239	2,146	2,535
Net Income for the Period (mill. yen)		1,137	1,506	1,731	1,510	6,747
Capital Stock (mill. yen)		1,050	1,050	1,050	1,050	1,050
Issued Shares (stock)		3,000	3,000	3,000	3,000	3,000
Net Assets (mill. yen)		10,212	11,857	13,658	14,819	20,002
Total Assets (mill. yen)		28,628	32,357	36,362	38,694	40,991
Net Assets per Share (yen)		3,404.03	3,952.38	4,552.92	4,939.87	6,667.38
Dividends per Share (yen)		30.50	30.50	30.50	30.50	30.5
Net Income per Share (yen)		379.33	502.18	577.09	503.49	2,249.18
Equity Ratio (%)		35.7	36.6	37.6	38.3	48.8
Return Rate on Equity (%)		11.7	13.7	13.6	10.6	38.8
Payout Ratio (%)		8.04	6.07	5.29	6.06	1.36
Number of Employees [Average Number of Temp Employees and Other]	(pax)	150 (191)	162 (188)	177 (150)	157 (133)	391 (147)

Ryuseki Groups Consolidated Finance Report

Financial Period		65th	The 66th	The 67th	The 68th	The 69th
Date of Account Settlement		Mar-16	Mar-17	Mar-18	Mar-19	Mar-20
Sales Volume (mill. yen)		70,681	72,520	82,067	87,751	85,497
Ordinary Income (mill. yen)		2,881	3,736	3,198	3,292	3,639
Net Income Attributable To Owners of Parent Company (mill. yen)		1,705	2,322	2,111	2,308	3,092
Comprehensive Income (mill. yen)		1,472	2,461	2,343	2,032	3,057
Net Assets (mill. yen)		11,688	14,212	16,448	18,389	21,703
Total Assets (mill. yen)		33,506	38,470	42,098	44,436	43,715
Net Asset per Share (yen)		3,896.96	4,739.03	5,483.52	6,129.75	7,134.85
Net Income per Share (yen)		568.40	774.32	703.85	769.51	1,030.92
Equity Ratio (%)		34.9	36.9	39.1	41.4	49.0
Return Rate on Equity (%)		15.6	17.9	13.8	13.3	15.5
Cash flows from operating activities (mill. yen)		3,929	3,556	3,244	2,232	4,262
Cash flows from investing activities (mill. yen)		△ 1,110	△ 2,925	△ 3,013	△ 2,684	△ 710
Cash flows from financing activities (mill. yen)		△ 3,420	△ 499	35	349	△ 3,717
Cash and cash equivalents at end of period (mill. yen)		791	924	1,190	1,086	920
Number of Employees Average Number of Temp Employees or Other	(pax)	879 (896)	1,045 (901)	1,079 (751)	1,192 (674)	1,121 (814)

Headquarters, Branch Offices and Distributors

Headquarters Office, General Administrative Department

2-2-3 Irijima Urasoe
Okinawa,
098-875-5000

Headquarters Office, Oil Distribution Department Oil Sales Support Division

2-2-3 Irijima Urasoe
Okinawa,
098-875-0280

Headquarters Office, Oil Distribution Department Distributor Management Division

2-2-3 Irijima Urasoe
Okinawa,
098-875-0282

Headquarters Office Gas Distribution Department

2-2-3 Irijima Urasoe
Okinawa,
098-876-1912

Headquarters Office Industrial Energy Department

2-2-3 Irijima Urasoe
Okinawa,
098-876-1881

Chubu(Central Part) Branch Office

4-32-32 Chibana
Okinawa, Okinawa
098-939-3301

Hokubu(Northern Part) Branch Office

881 Awa Nago Okinawa
0980-53-8513

Miyako Branch Office

2-40 Taira Nishi
Nakasone Miyakojima
Okinawa
09807-2-3192

Yaeyama Branch Office

1-2 Painuhama-cho
Ishigaki, Okinawa
09808-2-3876

Naha Logistics Center
3-27-1 Maejima Naha,
Okinawa 098-868-3337

Urasoe Logistics Center
4-20-6 Jicchaku Urasoe,
Okinawa 098-877-4111

Nanbu Depository Center
638 Kanegusuku Haeburu,
Okinawa 098-889-8537

Chubu Logistics Center
4-32-32 Chibana Okinawa,
Okinawa 098-
939-3301

Hokubu Logistics Center
881 Awa Nago, Okinawa
0980-53-8513

Miyako Logistics Center
2-40 Taira Nishi Nakasone
Miyakojima 09807-2-3192

Yaeyama Logistics Center
1-2 Painuhama-cho Ishigaki
Okinawa 09808-2-3876

Petroleum Distributors

[Naha, Nanbu (Southern Part) District of Okinawa main Island and remote Islands in the vicinity]
Bypass Gas Station Corp.
75-1 Daido Naha, Okinawa
098-887-7712

Takunan Sangyo Co.,Ltd.
3-2-4 Tsubogawa Naha,
Okinawa 098-833-5152

Yamashiro Sangyo Co., Ltd
173 Yorimiya Naha, Okinawa
098-832-7887

Zamami Sekiyu Shokai Co., Ltd
3-13-7 Tomari Naha,
Okinawa 098-869-9595

Kitadaito Sekiyu Shokai Co., Ltd
245 Nakano Kitadaito,
Okinawa
09802-3-4425

Nakazato Sekiyu Shokai Co., Ltd
220 Higa Kumejima,
Okinawa 098-985-7001

Yonamine Shokai Co., Ltd
332-1 Ota Kumejima,
Okinawa 098-985-2623

Iheya Gas Station Co., Ltd
192 Maedomari Iheya,
Okinawa
0980-46-2119

Aguni Sekiyu Hanbaijo
311-1 Hama Aguni, Okinawa
098-988-2025

Tonaki Sekiyu Hanbaijo
1862-1 Tonaki Tonaki,
Okinawa 098-989-2251

Futenma Sekiyu Co., Ltd
1-3-1 Uehara Ginowan,
Okinawa
098-892-2706

Miya Shoji & Co., Ltd
363 Yogi Okinawa, Okinawa
098-932-7282

Seikou Co., Ltd
136-1 Tengan Uruma,
Okinawa
098-972-6699

[Hokubu(Northern Part) District]

Onna Gas Station Co., Ltd
959 Maeganeku Onna,
Okinawa
098-964-2388

East Development (Higashi Kaihatsu) Corporation
87 Bimata Nago, Okinawa
0980-52-4587

Yamako Shoji Corporation
2-1-21 Gusuku Nago,
Okinawa
0980-52-2067

Okuma Gas Station Co., Ltd
344 Hanji Kunigami,
Okinawa
0980-41-2120

Aha Gas Station
273-2 Aha Kunigami,
Okinawa 0980-41-7330

[Miyako District]
Ikema Sekiyu Hanbaijo
277 Ikema Hirara
Miyakojima, Okinawa
0980-75-2012

Keiwa Shokai Co., Ltd
1176-3 Hirara-Shimozato
Miyakojima, Okinawa 2
0980-73-3337

Miyako Gas Station Corp.
841-3 Hirara-Nishizato
Miyakojima, Okinawa
0980-72-3741

Daiyone Kensetsu Corporation
275-1 Hirara-Nikadori
Miyakojima, Okinawa
0980-72-6282

Irabu Gas Station
645-1 Kuninaka Irabu
Miyakojima, Okinawa
0980-78-3100

Sarahama Sekiyu Hanbaijo Corp.
148-14 Irabu Maesatosoe
Miyakojima, Okinawa
0980-78-3222
Sunagawa Gas Station Co., Ltd
980-1 Gusukube-Fukuzato
Miyakojima, Okinawa
0980-77-7247

Fukuzato Gas Station Co., Ltd
624 Gusukube-
Fukuzato Miyakojima,
Okinawa
0980-77-4705

Tarama Kosan Co., Ltd
278-2 Shiokawa
Tarama, Miyako-gun
Okinawa
0980-79-2208

[Yaeyama District]
Yaeyama Sekiyu Co., Ltd
488-1 Maezato Ishigaki,
Okinawa
0980-83-2988

Ishigaki SS Group Co., Ltd
69 Tonoshiro Ishigaki
Okinawa
0980-82-3470

Seibu Sekiyu Co., Ltd
1004 Iriomote-
Hoshidate Takeotmi,
Okinawa
0980-85-6153

Kuroshima Sekiyu Hanbaijo
1499 Kuroshima
Taketomi, Okinawa
0980-85-4119
Kinjo Co., Ltd
53 Kohama Taketomi,
Okinawa
0980-85-3244

Yugafu Co., Ltd
158-2 Taketomi,
Taketomi, Okinawa
0980-85-2105

Tamamori Shokai Co., Ltd
201-38 Haimi
Taketomi, Okinawa
0980-85-5225
Hateruma Sekiyu Hanbaijo
2779 Hateruma,
Taketomi, Okinawa
0980-85-8519
Yonaguni Sekiyu Shokai Co., Ltd
4022 Yonaguni
Yonaguni, Okinawa
0980-87-2655

Gas Distributors

Naha, Nanbu (Southern Part) District

Gushiken Gas Store

690-1 Shiohira Itoman, Okinawa
098-994-2727

Gushikami Store

271-1 Gushichan Yaese, Okinawa
098-998-2218

Kuniyoshi Gas Shokai

22 Uetabaru Yaese, Okinawa
098-998-6724

Akamine Jutaku Setsubi (Housing Equipment Installer)

254-2 Kamizato Haeburu, Okinawa
098-889-4707

Nakamoto Propane Gas

1-19 Toyosaki Tomigusuku, Okinawa
098-891-6200

Asia Sekiyu Gas Co., Ltd

268-2 Kakazu Tomigusuku, Okinawa
098-851-1011

Shuri Gas Kogyo Co., Ltd

1-60-3 Shuri-Ishimine Naha, Okinawa
098-885-2233

Shikina Gas Store

3-10-5 Shikina Naha, Okinawa
098-832-5163

Naha Sōgō Gas Co., Ltd

1246-5 Shikina Naha, Okinawa
098-854-0385

Shimabukuro Gas Co., Ltd

2-1-34 Mihara Naha, Okinawa
098-832-0220

Zamami Sekiyu Shokai Co., Ltd

2-1-10 Tomari Naha, Okinawa
098-869-9595

Tonaki Sekiyu Gas Hanbaijo (Oil & Gas distributor)

1862-1 Tonaki Tonaki, Okinawa
098-989-2251

Tokashiki Sekiyu Co., Ltd (Oil distributor)

1779-5 Tokashiki Tokashiki, Okinawa
098-987-2200

【Chubu (central) District】

Shinei Setsubi Kogyo Co., Ltd

1408-1 Onaha Nishihara, Okinawa
098-946-9504

Urasoe Gas Co., Ltd

500-15 Minatogawa Urasoe, Okinawa
098-877-5468

Kyoei Gas Kogyo Co., Ltd

1-27-8 Takushi Urasoe, Okinawa
098-875-4470

Asahi Propane

3-32-7 Yafuso Urasoe, Okinawa
098-876-407

Okī Sangyo Co., Ltd

House Gas Installment Division
2-4-12 Nishihara Urasoe,
Okinawa

098-878-5511

Oasis Co., Ltd

3-31-21 Maehara Ginowan,
Okinawa

098-890-3005

Ginowan Gas Co., Ltd

1-4-1 Nagata Ginowan,
Okinawa

098-892-3824

Toyo Sangyo Co., Ltd

4-19-11 Misato Okinawa,
Okinawa

098-938-0865

Mirai Sougo Gas Co., Ltd

2-25-1 Miyazato Okinawa,
Okinawa

098-934-6077

Denyudo Propane

199 Taba, Uruma, Okinawa
098-973-7331

Fukuyama Gas Shokai

952-6 Takaesu, Uruma,
Okinawa

098-973-3537

Zaha Propane Co., Ltd

2-20-7 Agena Uruma, Okinawa
098-972-3780

Nakama Propane Co., Ltd

261-10 Akamichi Uruma,
Okinawa

098-973-3254

Kayō Propane

1181 Yonashiro Yakena Uruma,
Okinawa

098-978-3334

Kayō Energy Life

261-18 Miyazato Uruma,
Okinawa

098-973-6934

Clean Gas Co., Ltd

2-43-12 Awase Okinawa,
Okinawa

098-939-0346

Ai Pro Corp.

1-10-1 Takahara Okinawa,
Okinawa

098-989-8386

【Hokubu (Northern Part) District】

Yamako Shoji

Corporation

Gas Division Nago

Propane

4-2-17 Agarie Nago,
Okinawa

0980-52-2418

Nerome Propane

372 Teima Nago, Okinawa
0980-55-8115

Motobu Gas Co., Ltd

443 Tancha Motobu,
Okinawa

0980-47-3441

Nakijin Propane

260 Jana Nakijin, Okinawa
0980-56-2667

Shioya Denki

491 Shioya Ogimi,
Okinawa

0980-44-2138

Uehara Propane

118 Hentona Kunigami,
Okinawa

0980-41-5404

【Miyako District】

Yorikawa Shokai Co.,

Ltd

1068 Hirara Kugai
Miyakojima, Okinawa

0980-72-2357

Shimoji Propane Co.,

Ltd

1151-3 Hirara-Shimozato
Miyakojima, Okinawa

0980-72-3473

【Yaeyama District】

Misaki Propane Co., Ltd

98 Maezato Ishigaki,
Okinawa

0980-82-3670

Nakasoko Store

85 Hateruma Taketomi,
Okinawa

0980-85-8310

Tamamori Shokai Co.,

Ltd

201-73 Haimi Taketomi,
Okinawa

0980-85-5225

Ryuseki Life Support Co., Ltd.

Office Address 2-2-3 Irijima Urasoe Okinawa,
901-2123 Japan
Phone: 098-876-1920

C.E.O Seikou Yasuoka

Date of Establishment June 21st, 2019

Capital Stock 50 million yen

Number of Employees 595

Annual Sales 20,506 million yen

Business Content Operation of Service Station
Operation of Autobacs (Automotive parts and accessories retailing) Life insurance/ Non-life insurance agent dealings, Operation of convenience stores

Website <http://www.pitanet.co.jp>

Nichia Shoji Corporation

Office Address 308 -1 Ona Haeburu Okinawa,
901-1101 Japan
Phone: 098-888-0080

C.E.O Masanori Yamauchi

Date of Establishment April 17, 1974

Capital Stock 88 million yen

Number of Employees 32

Annual Sales 1,529 million yen

Business Content Retailing and distribution of painting and coating materials, waterproof material, machinery tools, interior and packing materials

Website <http://www.ryuseki.co.jp/nichia>

Ryuseki Business Service Corporation

Office Address 4-20-1 Jicchaku Urasoe Okinawa,
901-2122 Japan

C.E.O Kiyoshi Kamiunten

Date of Establishment May 20, 1982

Capital Stock 100 million yen

Number of Employees 17

Annual Sales 67 million yen

Business Content Operation of industry-sponsored childcare service

Website <https://www.ryuseki-bs.co.jp/>

Ryuseki Frontline Co., Ltd.

Office Address 4-20-1 Jicchaku Urasoe Okinawa,
901-2122 Japan
Phone: 098-874-6000

C.E.O Kiyoshi Kamiunten

Date of Establishment June 21st, 2019

Capital Stock 50 million yen

Number of Employees 539

Annual Sales 10,005 million yen

Business Content Staffing service, System development, IT devices distribution, Solution provision, Managing au shops and UQ sales spot, Operation of CURVES (Sports gym), Advertisement and Sales promotion design

Website <https://www.frontline.ryuseki-group.jp/>

Daimon Shoji Corporation

Office Address 2-6-2 Irijima Urasoe Okinawa,
901-2123 Japan
Phone: 098-877-2950

C.E.O Kunio Uehara

Date of Establishment May 15, 1972

Capital Stock 10 million yen

Number of Employees 64

Annual Sales 2,702 million yen

Business Content Retail distribution of food products for catering, refrigerated and frozen foods.

Website <http://daimonsj.co.jp/>

Ryuseki Construction Co., Ltd.

Office Address 4-20-1 Jicchaku Urasoe Okinawa,
901-2122 Japan
Phone: 098-878-3388

C.E.O Ken Akena

Date of Establishment December 22nd, 1999

Capital Stock 100 million yen

Number of Employees 90

Annual Sales 2,840 million yen

Business Content Design and execution supervision of construction work of detached homes, condominium, hotels and service station.
Consulting, sales and brokering real estate. Painting and renovation of building. Red soil outflow prevention work.

Website <http://www.ryuseki-kensetsu.jp>

Ryuseki Carepro Corporation

Office Address 32 Kokuba Naha Okinawa,
902-0075 Japan
Phone: 098-840-0081

C.E.O Yuichi Tamaki

Date of Establishment May 26, 2004

Capital Stock 10 million yen

Number of Employees 105

Annual Sales 535 million yen

Business Content Nursing-care services (Pita Sapo) Assisted-living fee-based nursing homes Himawari (Designated by Naha city as community based specified facility)

Website <http://carepro.ryuseki-group.jp>